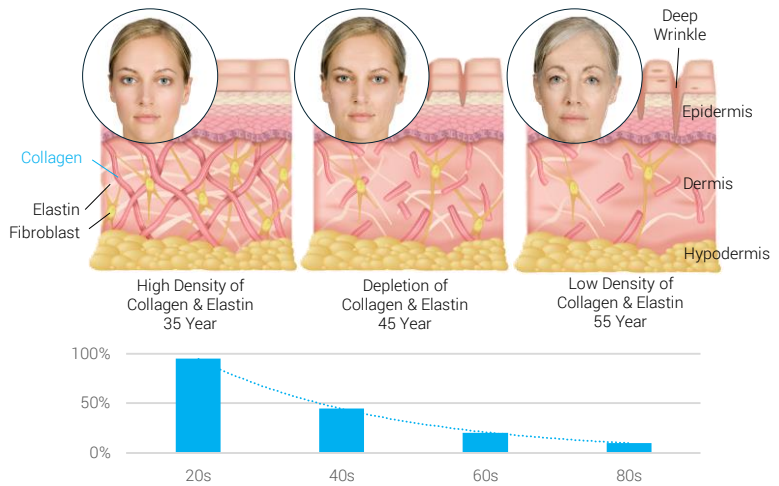
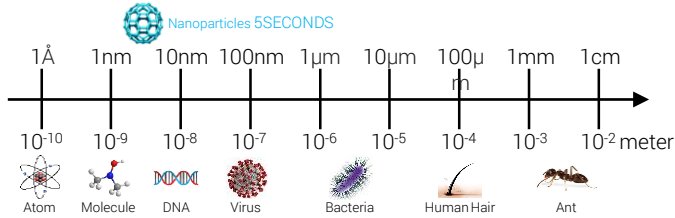


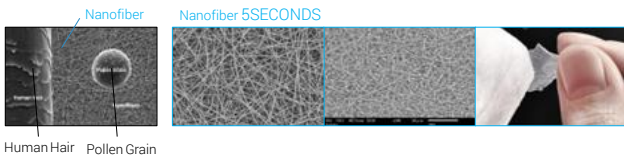
Q What is nanotechnology?

- Nanotechnology involves working at the nanoscale, which ranges from 1 to 100 nanometers in size. To grasp how small this is:
 - A nanometer is a billionth of a meter (10^{-9} meters).
 - There are 25,400,000 nanometers in an inch.



Q What is nanofiber?

- Electrospinning is an effective method for producing extremely thin fibers. Significant advancements have been achieved in refining electrospinning techniques and tailoring nanofibers for diverse applications.



A 5SECONDS active ingredients in the patch?

- The carefully selected active ingredients in the 5SECONDS patch are manufactured through a patented electrospinning process into nano-fibers smaller than DNA and thinner than hair strands. When misted onto nano-fibers, the active ingredients immediately dissolve into a nano-solution composed of nano particles.
- Extremely smaller than conventional creams or serums, this allows for faster and deeper delivery of active ingredients to the dermal layer, maximizing efficacy.

Q How does collagen affect your skin?

- Collagen, making up 70% of dry skin mass, enhances skin strength, elasticity, and hydration. It forms the framework for elastin and hyaluronic acid, crucial for skin elasticity and hydration. As you age, collagen production declines, causing thinner, drier, less elastic skin, and wrinkles, typically starting around age 30.

- Did you know - 80% of ageing comes from UV exposure. Wearing SPF 30-50 daily can help reduce the signs of early ageing and also help protect against skin disease and health issues. Even if it's cloudy still put your SPF on!

A Collagen in 5SECONDS?

- Peptan, the top brand for collagen peptides, is the flagship product of Rousselot, a renowned company established in 1891.
- The patch contains only 99% (990,000ppm) collagen, Peptan and 1% (10,000ppm) hyaluronic acid, with no other additives.
- Pure collagen patches are obtained using a patented nano electrospinning technique.

A 5SECONDS Collagen Intensive Mist & Serum?

- Intensive Mist and Intensive Serum also contain collagen, adenosine, complex hyaluronic acid, and other active ingredients, enhancing the effectiveness of the patches.
- A carry-friendly Intensive Mist is easy to bring along, making it convenient for regular application to prevent skin dryness and restore vitality by spraying it as needed.